

# HP<sup>®</sup>

## HAMPTON



**25** YEAR  
**MECHANICAL WARRANTY**

**LOCKCASE & CYLINDER**

**1** Electronic Lock - **ELH 5113 MF FIN PASS**

---

**2** Hinge

**3** Mortise  
Cylinder  
Mortise & Cylinder

---

**4** Pull Handle

**6** Lever Handle Tube Roses

**7** Lever Handle Plate  
Pull Plate

**8** Handleset (40x85)

**10** Handleset (30x85)

---

**11** Cylindrical Lockset  
Padlock

**12** Door Closer  
Door Bolt

**13** Magnetic Door Stopper  
Flush Bolt  
Door Viewer  
Door Chain  
Spring Knip

**14** Hanger Hook Wall  
Window Stay  
Adjustable Window Holder

---

**15** Aluminium Lock  
Crescent Lock  
Casement Handle  
Mohair

**16** Friction Stay  
Arm Stay

---

**17** Floor Spring  
Patch Fitting

**18** Shower Hinge  
Glass Clip  
Glass Suction  
Silicone Gun

**19** Silicone/Sealant

---

**20** Roller Caster  
Showcase Roller  
Sliding Rail

**21** Furniture Hinge  
Furniture Handle  
Spring Support

# TABLE OF CONTENT

**ELECTRONIC LOCK**

**ELH 5113**  
**MF FIN PASS**



**1** YEAR  
**MECHANICAL & ELECTRICAL**  
**WARRANTY**

**ACCESS :**



FINGERPRINT



PASSWORD



CARD



MECHANICAL  
KEY

**FEATURES :**



TURN UP HANDLE  
FOR LOCK



BATTERY POWER  
AA ALKALINE 4 PCS



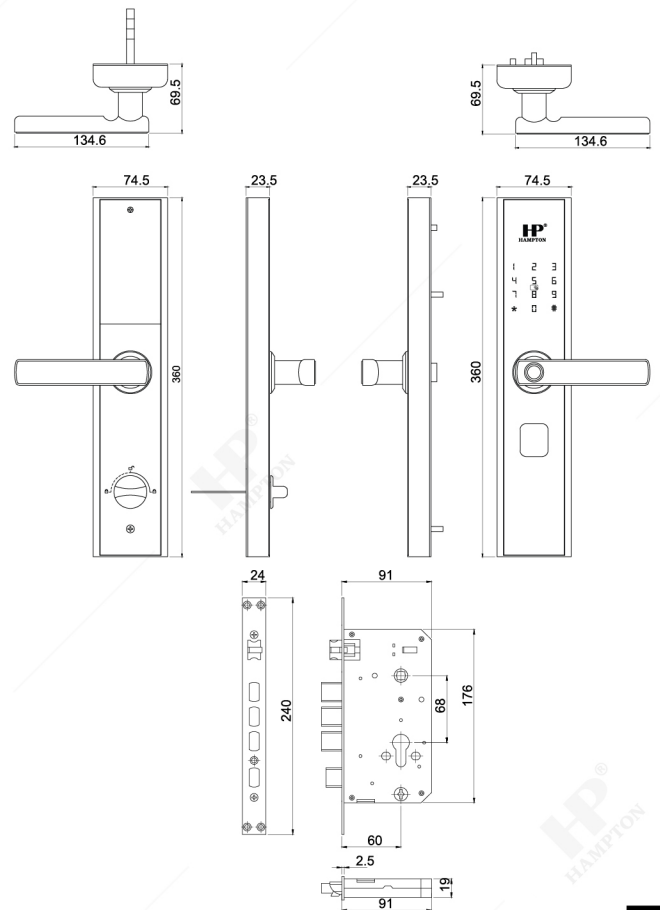
TOTAL 130 USERS



VOICE DIRECTION

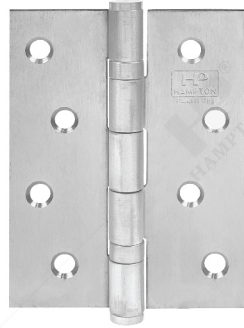


LOW POWER WARNING  
(MICRO USB BACKUP POWER)





ESS 3x2,5x2MM 2BB SSS



ESS 4x3x2MM 2BB SSS

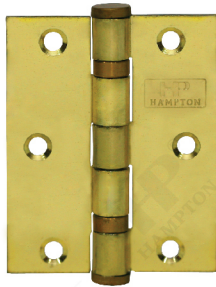


ESS 4x3x3MM 4BB SSS



ESS 5x3x3MM 4BB SSS

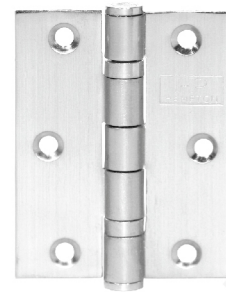
**IRON HINGE**



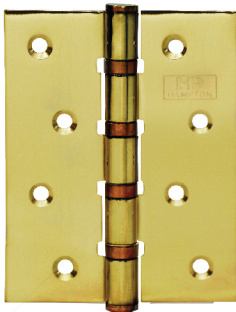
ES IR 3x2,5x2MM 2BB GP



ES IR 3x2,5x2MM 2BB CP



ES IR 3x2,5x2MM 2BB SN



ES IR 4x3x2MM 4BB GP



ES IR 4x3x2MM 4BB CP



ES IR 4x3x2MM 4BB SN



ES IR 5x3x2,5MM 4BB GP



ES IR 5x3x2,5MM 4BB CP



ES IR 5x3x2,5MM 4BB SN

## MORTISE

### INTERLATCH / SWING



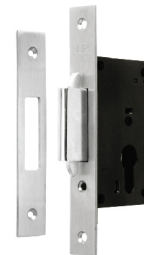
MTS IL HP485 SSS

### ROLLER LATCH



MTS RL HP485 SN

### SLIDING



MTS SLD 4100 40MM SSS

## CYLINDER



CYL TC BR DL 60MM SN



CYL DC BR DL 60MM SN



CYL KC 5123 / 5423

## MORTISE & CYLINDER SET

### ECOLINE SERIES



MTS IL EC3085 + CYL DC 65MM SN



MTS RL EC3085 + CYL DC 65MM KK SN



MTS IL EC4085 + CYL DC 60MM KK SN



MTS RL EC4085 + CYL DC 60MM KK SN  
Available : MATT BLACK



MTS IL EC4058 + CYL DC 60MM KK SN



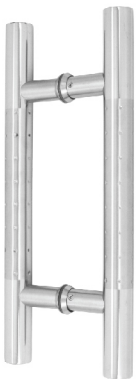
PH 003  
22x15x300x180 SSS+PSS  
Available:  
22x15x400x250 SSS+PSS



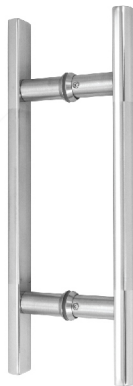
PH 005  
25x300x180 SSS+PSS  
Available:  
25x400x230 SSS+PSS



PH 007  
25x300x180 SSS+PSS  
Available:  
25x400x250 SSS+PSS  
25x400x250 MATT BLACK



PH 010  
25x300x180 SSS+PSS  
Available:  
25x400x250 SSS+PSS



PH 012  
25x15x300x180 SSS+PSS  
Available:  
25x15x400x250 SSS+PSS



PH 013  
25x300x230 SSS+PSS  
Available:  
25x400x280 SSS+PSS



PH 015  
25x300x200 SSS+PSS



PH 017  
25x300x240 SSS+PSS  
Available:  
25x400x300 SSS+PSS



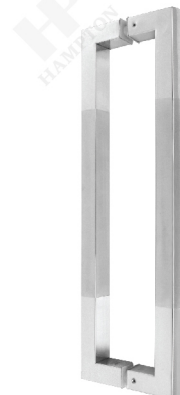
PH 018  
25x22x300x180 PSS+SSS  
Available:  
22x22x400x250 PSS+SSS  
30x15x600x400 MATT BLACK



PH 021  
25x300x150 SSS+PSS



PH 023  
25x300x150 SSS+PSS  
Available:  
25x400x230 SSS+PSS



PH SQ501  
25x25x475x450 PSS+SSS  
Available:  
30x30x630x600 PSS+SSS  
25x25x475x450 MATT BLACK



PH 519  
32x482x450 PSS+SSS



PH 520  
25x450x380 PSS+SSS  
Available:  
32x600x400 PSS+SSS



PH 521  
32x475x450 PSS+SSS  
Available:  
32x475x450 MATT BLACK



PH C 801  
32x382x350 PSS  
Available:  
32x332x300 PSS



PH 801G  
32x382x350 MATT BLACK  
Available:  
32x332x300 MATT BLACK



PH 801G  
32x332x300 WHITE  
Available:  
32x382x350 WHITE



PH 809  
32x382x350 PSS  
Available:  
32x332x300 PSS



PH 813  
25x375x350MM PSS



PH 814  
25x(475 / 175)x(450 / 150) PSS  
Available:  
25x(525 / 225)x(500 / 200) PSS



LHTR 02-0002 SSS  
Available:  
LHTR 02-0002 MATT BLACK



LHTR 02-0003 19MM SSS  
LHTR 02-0003 22MM SSS



LHTR 02-0006 SSS



LHTR 02-0007 SSS  
Available:  
LHTR 02-0007 MATT BLACK



LHTR 02-0016 19MM SSS  
LHTR 02-0016 22MM SSS



LHTR 02-019 SSS



LHTR 02-0022 SSS



LHTR 02-0023 SSS



LHTR 02-0024 SSS



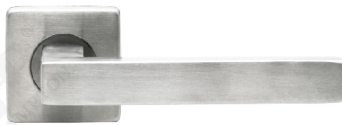
LHTR 02-0039 SSS



LHTR 02-0821 SSS



LHTR 02-820 SSS



LHTR 02-104 SSS  
Available:  
LHTR 02-104 MATT BLACK



LHTR 02-0003 OVAL SSS



LHTR 02-0006 OVAL SSS



LHTR 02-0039 OVAL SSS



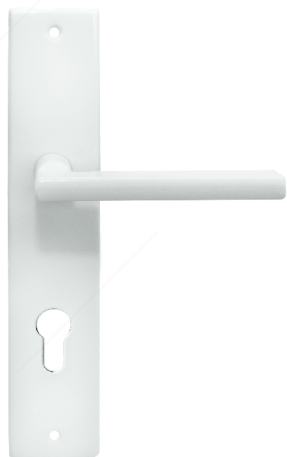
LHTR 02-84030 OVAL SSS



LHTR 02-820 OVAL SSS



## LEVER HANDLE PLATE



LHP 7301 WH



LHP 7303 WH



LHP 8803 WH



LHP 7301 BK



LHP 7303 BK



LHP 8803 BK

## PULL PLATE



PP 512 SSS



PP 001 ZA SN



PP 001 ZA AB



HANDLESET (40X85)  
LHP AI H1534 SN+CP



HANDLESET (40X85)  
LHP AI H1536 SN+CP



HANDLESET (40X85)  
LHP AI H1567 SN+CP



HANDLESET (40X85)  
LHP AI H1585 SN+CP



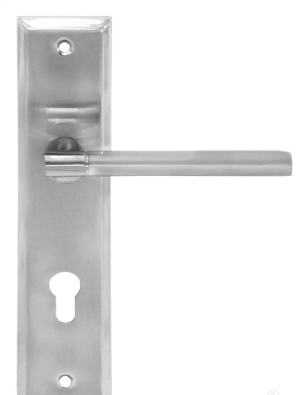
HANDLESET (40X85)  
LHP AI H155302 SN



HANDLESET (40X85)  
LHP AI H150502 SN+CP



HANDLESET (40X85)  
LHP AI H150503 SN+CP



HANDLESET (40X85)  
LHP AI H150705 SN+CP

# HANDLESET (40x85)

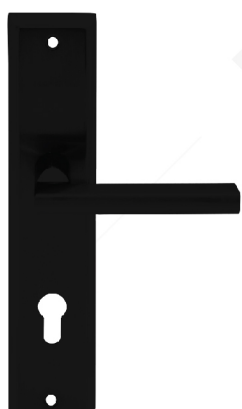
## BLACK SERIES



HANDLESET (40X85)  
LHTR 02-0003 MATT BLACK



HANDLESET (40X85)  
LHTR 02-0006 MATT BLACK



HANDLESET (40X85)  
LHP AI H1228 MATT BLACK



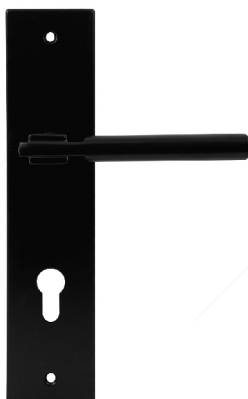
HANDLESET (40X85)  
LHP AI H1567 MATT BLACK



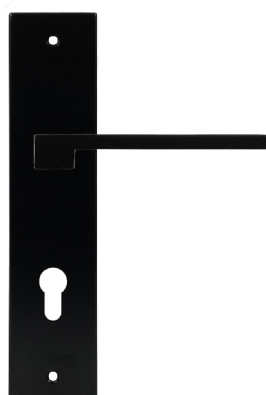
HANDLESET (40X85)  
LHP AI H1585 MATT BLACK



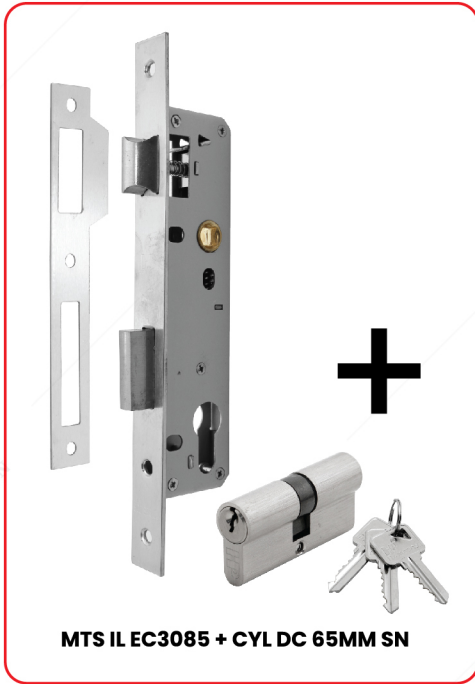
HANDLESET (40X85)  
LHP AI H120502 MATT BLACK



HANDLESET (40X85)  
LHP AI H120503 MATT BLACK



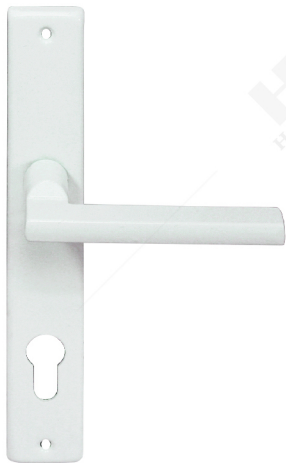
HANDLESET (40X85)  
LHP AI H125302 MATT BLACK



**MTS IL EC3085 + CYL DC 65MM SN**



HANDLESET (30X85)  
LHTR 02-84030 SSS



HANDLESET (30X85)  
LHP AI H1514 WHITE



HANDLESET (30X85)  
LHP AI H1514 YBIC



HANDLESET (30X85)  
LHP AI H1514 BLACK



**MTS IL EC4058 + CYL DC 60MM KK SN**



HANDLESET (40X58)  
LHP AI H90-5810 SN+CP



HANDLESET (40X58)  
LHP AI H91-5811 SN+CP

# CYLINDRICAL LOCKSET



KCBL 5587 ET SSS (For Entrance)



KCBL 5587 BK SSS (For Toilet)

# PADLOCK



PL H501-40S CP



PL H501-50S CP



PL H501-60S CP



PL H501-40L CP



PL H501-50L CP



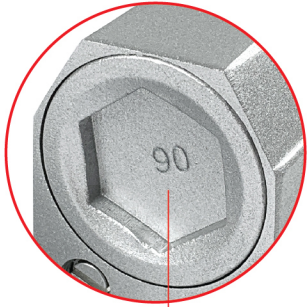
PL H501-60L CP



PL H501-50S 3 MK CP



MAX CAPACITY : 40 KG



DCL 202 HO NA  
Available : • WH  
• BA



DCL 202 NHO BA  
Available : • NA  
• WH

**DOOR BOLT**

**DB H01**



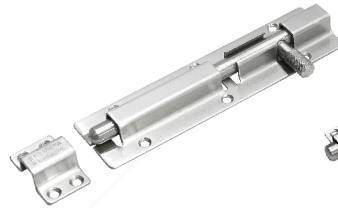
DB H01 2" SSS



DB H01 3" SSS



DB H01 4" SSS



DB H01 6" SSS

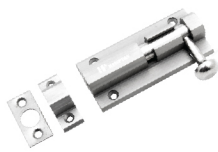


DB H01 12" SSS

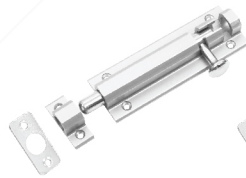
**DB AI H03**



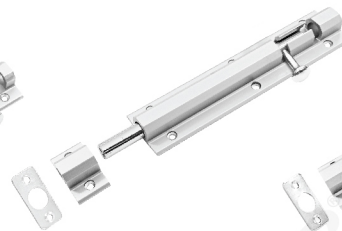
DB AI H03 2" MATT BLACK  
Available : NA



DB AI H03 3" NA  
Available : MATT BLACK



DB AI H03 4" NA

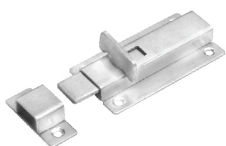


DB AI H03 6" NA



DB AI H03 12" NA

**DB H021**



DB H021 3" SSS

## MAGNETIC DOOR STOPPER



HPT MDS 2229 SN



HPT MDS 2231 SN



HPT MDS 2805 SSS



HPT MDS 5183 SSS

## FLUSH BOLT



FB 540 8"+12" SSS

## DOOR VIEWER



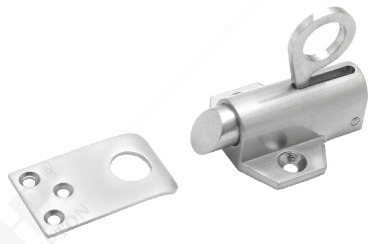
DV H20 SN

## DOOR CHAIN



DC 513 SSS

## SPRING KNIP



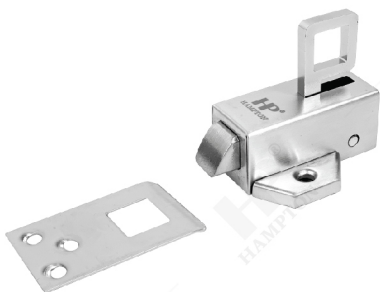
SK 109Z SN  
Available : GP



SK SQ110 SN



SK SQ111 CP



SK SQ112 SSS



SK SQ112 MATT BLACK

**HANGER HOOK WALL**

**WINDOW STAY**



HHW AL 003 WHITE



HHW AL 003 GREY



HHW AL 003 MATT BLACK



HHW AL 005 WHITE



HHW AL 005 GREY



HHW AL 005 MATT BLACK



HHW AL 009 WHITE



HHW AL 009 GREY



HHW AL 009 MATT BLACK



HHW ZC 002 CF



HHW ZC 002 MAB



HHW ZC 002 MATT BLACK



HHW ZC 036 CF



HHW ZC 036 GREY



WS 511 8" SSS



WS 511 8" HX MATT BLACK  
Available : SSS



WS 512 8" SQ CP



WS 512 8" SQ MATT BLACK

**ADJUSTABLE WINDOW HOLDER**



AWH 402 8" SN



AWH 402 8" MATT BLACK



## ALUMINIUM LOCK



KC HPT 5123



KC HPT 5423



KC HPT 5128 PJ



KC HPT 5128 PD

## CRESCENT LOCK



CL 530 NA



CL 530 BK



CL 530 WH



CL 530 YBIC

## CASEMENT HANDLE



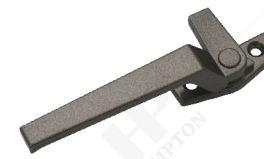
CHW 4 L/H NA  
Available : R/H



CHW 4 R/H WH  
Available : L/H



CHW 4 L/H BK  
Available : R/H



CHW 4 R/H YBIC  
Available : L/H

## MOHAIR



MOHAIR HAMPTON BIG  
MHR 1,1x0,7x175M LIGHT GREY



MOHAIR HAMPTON BIG  
MHR 1,1x0,7x175M BLACK



MOHAIR HAMPTON BIG  
MHR 1,1x0,7x175M BROWN



MOHAIR HAMPTON SMALL  
MHR 0,69x0,5x200M LIGHT GREY



MOHAIR HAMPTON SMALL  
MHR 0,69x0,5x200M BLACK



FS 810 8"



FS 810 10"



FS 810 12"



FS 810 14"



FS 810 16"



FS 810 20"

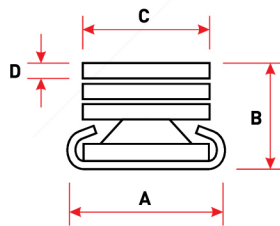


FS 810 24"

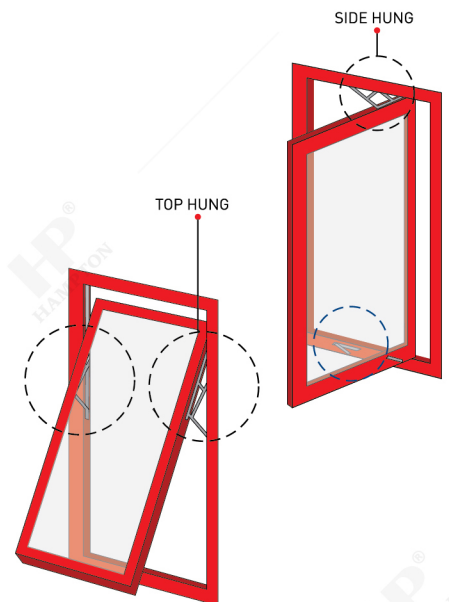
**ARM STAY**



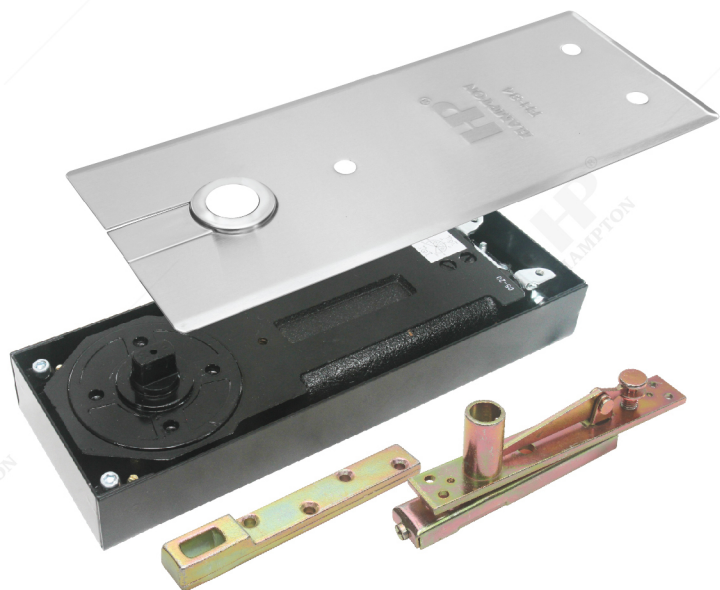
AR 12" SSS



TYPE	A	B	C	D	Max. Vent. Height (mm)	Max. Vent. Width (mm)	Max. Vent. Weight (kg)	Opening Angle (°)	Number of Bar
FS 810 8"	19	14	15.5	2	600	400	6	60°	4
FS 810 10"	19	14	15.5	2	700	500	7	90°	4
FS 810 12"	19	14	15.5	2	900	600	10	90°	4
FS 810 14"	19	16	15.5	2.5	1000	700	13	90°	4
FS 810 16"	19	16	15.5	2.5	1200	800	18	90°	4
FS 810 20"	22	17	18	2.8	1300	800	22	60°	5
FS 810 24"	22	17	18	2.8	1500	800	24	60°	6



# FLOOR SPRING



**FH 84 SSS**  
 Max Capacity : 80 kg  
 Max Door Width : 900 mm



**FH 210 SSS**  
 Max Capacity : 60 kg  
 Max Door Width : 800 mm

# PATCH FITTING



PT 10 PSS



PT 20 PSS



PT 30 PSS

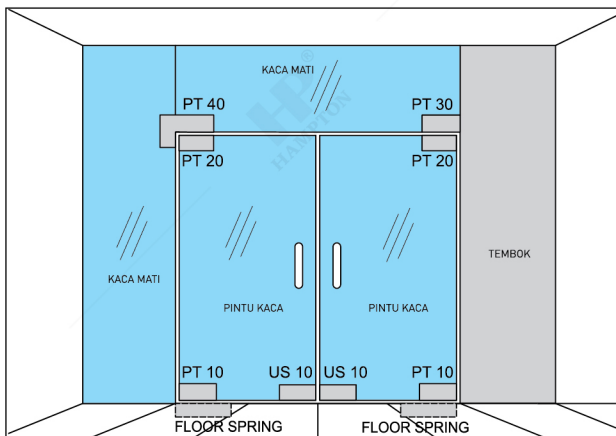


PT 40 PSS



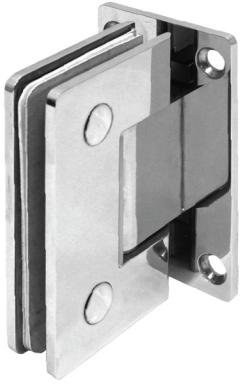
US 10 PSS

ILLUSTRATION :



**SHOWER HINGE**

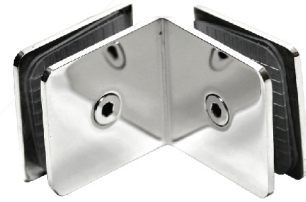
**GLASS CLIP**



SH-5801 GW PSS  
Glass Thickness : 8 - 10 mm



SH-5803 GG (180) PSS  
Glass Thickness : 8 - 10 mm



GL H001 (GG) PSS



GL H001 (GW) PSS

**GLASS SUCTION**



GSC 3S

**SILICONE GUN**



SILICONE GUN HAMPTON 2000

## SILICONE EXTENDED HPT-GP5311

**DESCRIPTION :**

Hampton HPT-GP5311 is an acetic cure general purpose sealant suitable for construction and household repairs. It gives excellent sealing and adhesion to glass, tiles, ceramics fiberglass, aluminium, non-oily woods, plastic and many other non-porous materials.

**APPLICATION :**

Repairing, plumbing, gap-filling and glazing

**COLOURS :**

Clear, Black, Brown, White, Light Grey

**PACKING :**

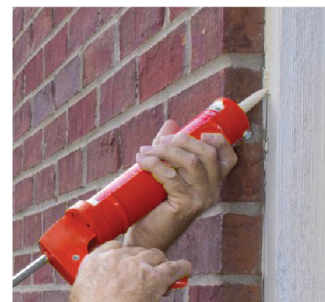
Silicone HPT GP-5311 is available in 300 ml disposable plastic cartridges.

**STORAGE :**

Store in dry and cool place below 30° C (90° F). Use within 12 months from date of production.



PROPERTY	RESULT
UNCURED-AS TESTED AT 50% RH AND 23°C	
FLOW, SAG OR SLUMP	1 mm max
TACK-FREE TIME	10 minutes
EXTRUSION RATE	800 ml / minute
CURING SPEED	2-4 mm / day
WORKING TIME	5 minutes
APPLICATION TEMPERATURE	4°C to 40°C
CURING TIME	7-14 days
SPECIFIC GRAVITY	0.96 g / cm³
AS CURED-AFTER 21 DAYS AT 50% RH AND 23°C	
DUROMETER HARDNESS, SHORE A	23
ULTIMATE TENSILE STRENGTH	0.60 mpA
ELONGATION AT BREAK	300%
TEMPERATURE RESISTANCE	-30°C to 90°C



**ROLLER CASTER**



RC 50 2" BALL  
Capacity Max : 50 kg / Pair



RC PP 50 2" BRAKE  
Capacity Max : 30 kg / Pair



RC PP 50 2" NO BRAKE  
Capacity Max : 30 kg / Pair



RC PP 75 3" BRAKE  
Capacity Max : 50 kg / Pair



RC PP 75 3" NO BRAKE  
Capacity Max : 50 kg / Pair

**SHOWCASE ROLLER**



SCR H001 BIG CP



SCR H001 SMALL CP

**SLIDING RAIL**

TYPE	MAX. CAPACITY
SR H3 1,8M NA	100 Kg
SR H4 2M NA	



BRACKET (4 pcs)



ROLLER (2 pcs)



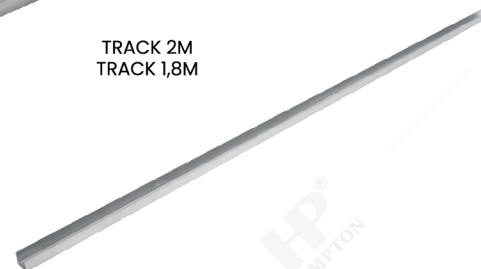
STOPPER (2 pcs)



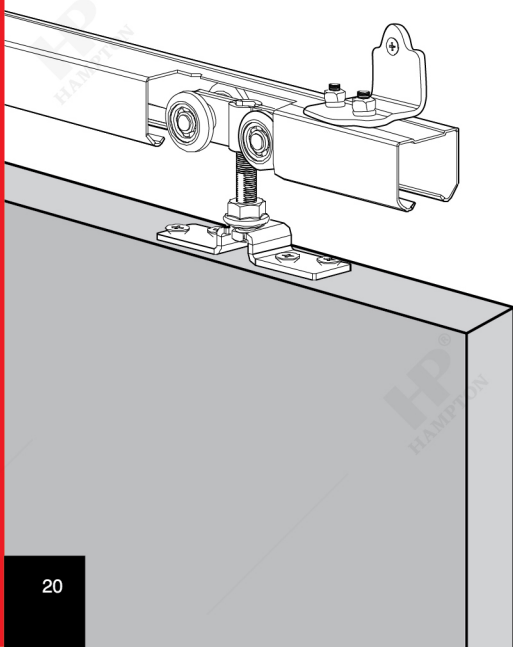
TRACK 2M  
TRACK 1,8M



FLOOR GUIDE (1 pcs)



U-CHANNEL 1M



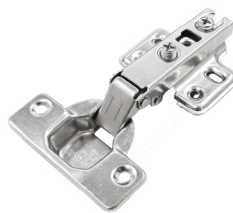
# FURNITURE HINGE



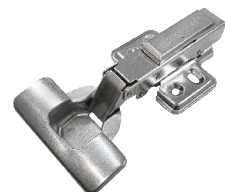
ESS SL 5" SSS



HYD ES SD H5103 CP



HYD ES SD H5261 FULL OVERLAY CP



HYD ES SD H5333 FULL OVERLAY CP

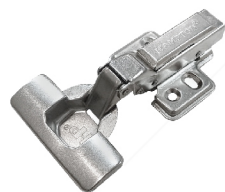
ILLUSTRATION :



ESS SL 9" SSS



HYD ES SD H5261 HALF OVERLAY CP



HYD ES SD H5333 HALF OVERLAY CP



HYD ES SD H5261 INSET CP



HYD ES SD H5333 INSET CP

# FURNITURE HANDLE



FH H601 12x204MM SSS  
FH H601 12x268MM SSS  
FH H601 12x332MM SSS



FH H602 15x271MM SSS  
FH H602 15x335MM SSS



FH H603 10x20x202MM SSS  
FH H603 10x20x266MM SSS  
FH H603 10x20x330MM SSS



FH H605 10x20x170MM SSS  
FH H605 10x20x266MM SSS  
FH H605 10x20x330MM SSS



FH H606 14x264MM SSS+PSS  
FH H606 14x328MM SSS+PSS



FH H607 15x15x200MM SSS+PSS  
FH H607 15x15x328MM SSS+PSS



FH H608 10x10x200MM PSS  
FH H608 10x10x400MM PSS



FH H610 15x15x300MM SSS  
FH H610 15x15x400MM SSS  
FH H610 15x15x500MM SSS

# SPRING SUPPORT



SP H5213 100N SILVER



SP H5221 SOFT CLOSER 100N SILVER

# HP<sup>®</sup> HAMPTON

Available at :



HPT/ALL/2024